

# Cavity plug universal BT plus

## Advantages



- Universal: useable for board thicknesses from 10 to 70 mm
- Very good load values
- Quick and easy handling
- No special installation tool required

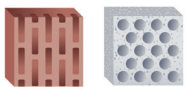
## Suitable building materials

### Very suitable



- Plasterboard/  
Fibreboard
- Chipboard

### Suitable to a limited extent



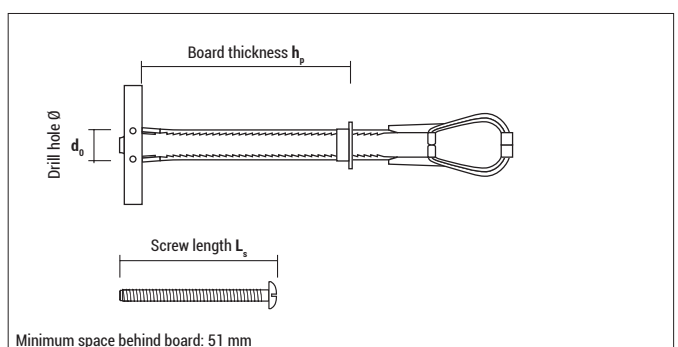
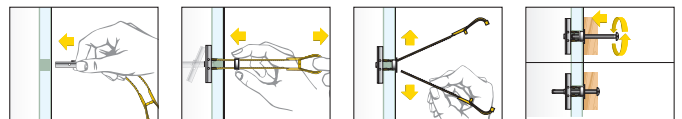
- Hollow bricks with  
large chambers
- Hollow concrete  
slab ceilings



## Approvals and certificates



## Mounting



## Cavity plug universal BT plus



**BT plus** without screw

Type	Art-No	$d_0$ [mm]	$h_p$ min-max [mm]	Thread [mm]	€ / 100 pcs	[pcs]	[pcs]
BT plus M4	9Y4BTP	13	10 - 70	M4		40	320
BT plus M5	9Y5BTP	13	10 - 70	M5		30	240
BT plus M6	9Y6BTP	13	10 - 70	M6		30	240
BT plus M8	9Y8BTP	18	10 - 70	M8		20	160



**BT plus** with screw

Type	Art-No	$d_0$ [mm]	$h_p$ min-max [mm]	Thread [mm]	$L_s$ [mm]	Recess	€ / 100 pcs	[pcs]	[pcs]
BT plus M4 LO	9Y4BTPL0	13	10 - 70	M 4	50	PZ2 / slot		40	320
BT plus M5 LO	9Y5BTPL0	13	10 - 70	M 5	62	PZ2 / slot		30	240
BT plus M6 LO	9Y6BTPL0	13	10 - 70	M 6	62	PZ2 / slot		30	240
BT plus M8 K	9Y8BTPK	18	10 - 70	M 8	60	SW13 / hex		20	160



**Blister BT plus** with screw



Type	Art-No	$d_0$ [mm]	$h_p$ min-max [mm]	Thread	$L_s$ [mm]	Recess	€ / Blister	[pcs]	[Blister]
BT M4 LO	54BTLO4	13	10 - 70	M4	50	PZ2 / slot		4	10
BT M5 LO	55BTLO4	13	10 - 70	M5	62	PZ2 / slot		4	10
BT M6 LO	56BTLO4	13	10 - 70	M6	62	PZ2 / slot		4	10
BT M8 K	58BTK2	18	10 - 70	M8	60	SW13 / hex		2	10

## Loads $F_{rec}$

Type	$d_0$ [mm]	Tension load $N_{rec}$ in plasterboard				Shear load $Q_{rec}$ in plasterboard			
		$h_p = 9,5$ mm [kN]	$h_p = 12,5$ mm [kN]	$h_p = 2 \times 9,5$ mm [kN]	$h_p = 2 \times 12,5$ mm [kN]	$h_p = 9,5$ mm [kN]	$h_p = 12,5$ mm [kN]	$h_p = 2 \times 9,5$ mm [kN]	$h_p = 2 \times 12,5$ mm [kN]
BT plus M4	13	0,07	0,15	0,15	0,30	0,20	0,20	0,25	0,30
BT plus M5	13	0,20	0,25	0,40	0,50	0,30	0,30	0,50	0,50
BT plus M6	13	0,20	0,25	0,40	0,50	0,30	0,30	0,50	0,50
BT plus M8	19	0,20	0,25	0,40	0,50	0,30	0,40	0,50	0,50

$F_{rec}$ : Recommended loads incl. safety factor of min. 3